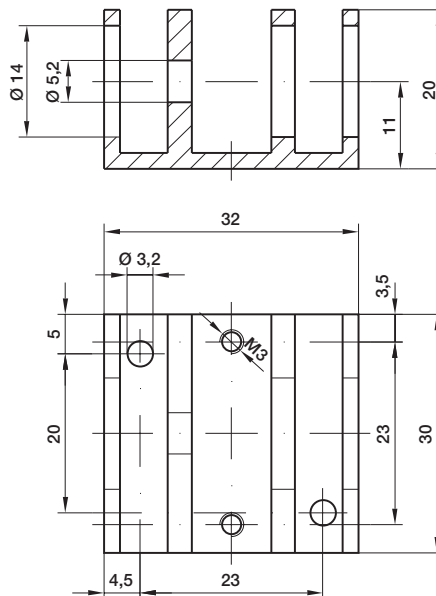
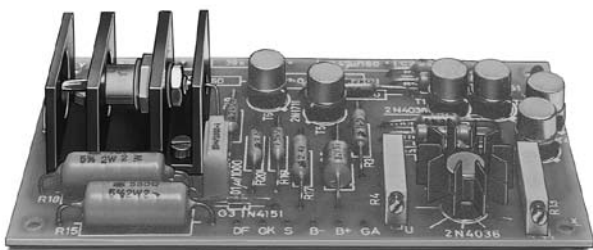


Profilkühlkörper | Extruded heat sinks | Dissipateurs extrudés

KL-116



Typ	Artikel-Nr.	Länge in mm	Oberfläche	Thermischer Widerstand (K/W)
KL-116/30/sw	1160801	30	sw	13,9

Dioden-Kühlkörper

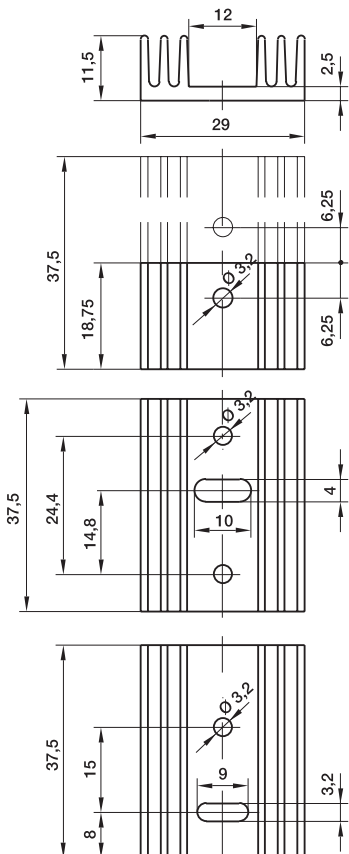
Der Halbleiter-Kühlkörper ermöglicht den waagerechten Einbau von Zener-Dioden und Thyristoren auf gedruckten Schaltungen bei einer Bauhöhe von nur 20 mm.

Diode Heat Sink

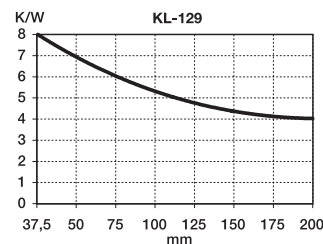
With this type of semiconductor heat sink Zener diodes and thyristors can be horizontally mounted on PCB's. Overall height only 20 mm.

Dissipateurs Diodes

Le dissipateur de chaleur pour semi-conducteurs, permet le montage horizontal de diodes Zener et de Thyristors sur des circuits imprimés, avec un encombrement maxi de 20 mm en hauteur.



KL-129

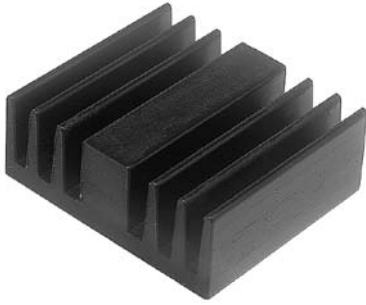


TO-220

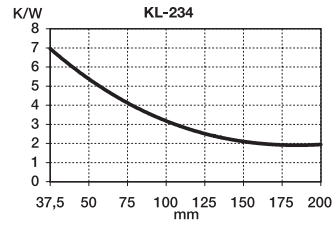
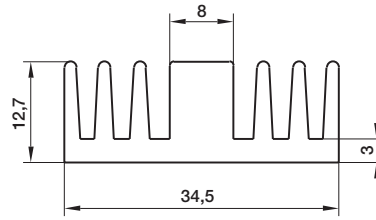
TO-220
SOT-32

TO-32

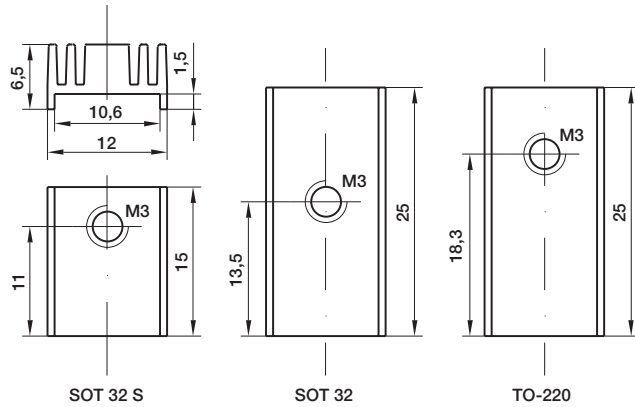
Typ	Artikel-Nr.	Länge in mm	Lochbild	Oberfläche
KL-129/18,75/220/m	1290800	18,75	TO-220	m
KL-129/37,5/220/m	1290100	37,5	TO-220	m
KL-129/37,5/32/sw	1290131	37,5	TO-32	sw
KL-129/37,5/32/220/sw	1290151	37,5	TO-32/220	sw



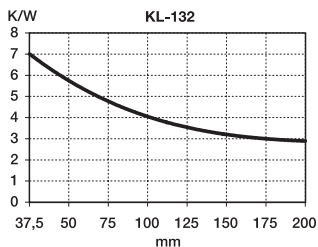
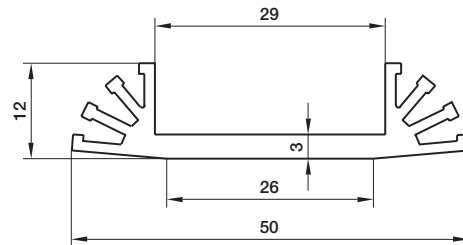
KL-234
TO-220
TOP-3



KL-235

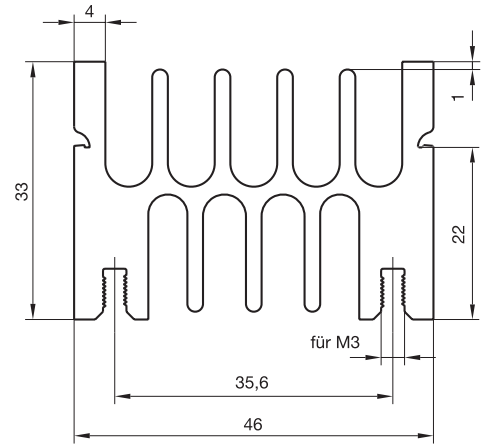
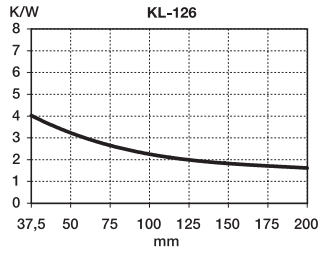
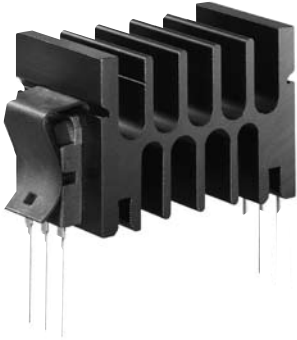


KL-132

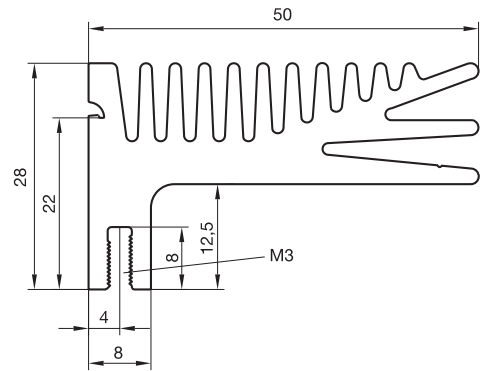
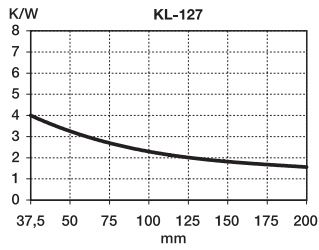
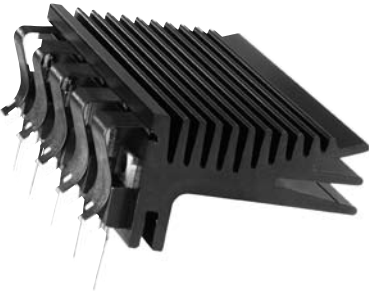


Typ	Artikel-Nr.	Länge in mm	Lochbild	Oberfläche	Thermischer Widerstand (K/W)
KL-235/15/SOT 32/sw	2350741	15	SOT 32	sw	38,5
KL-235/25/TO-220/sw	2350811	25	TO-220	sw	36
KL-235/25/SOT 32/sw	2350841	25	SOT 32	sw	36
KL-132/37,5/3/sw	1320111	37,5	TO-3	sw	
KL-132/37,5/3/9/32/66/sw	1320131	37,5	TO-3/9/32/66	sw	

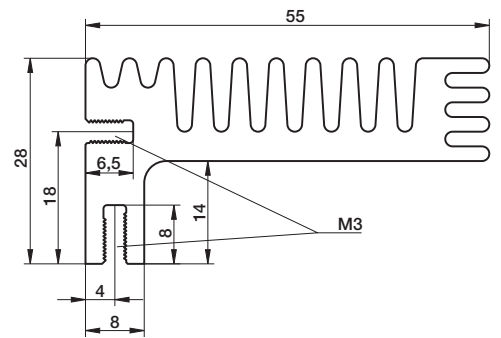
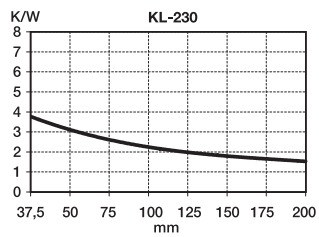
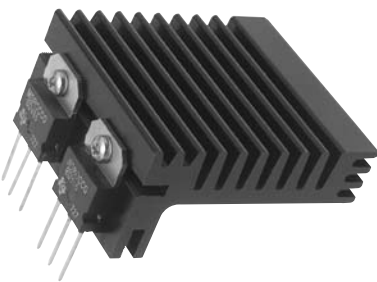
KL-126



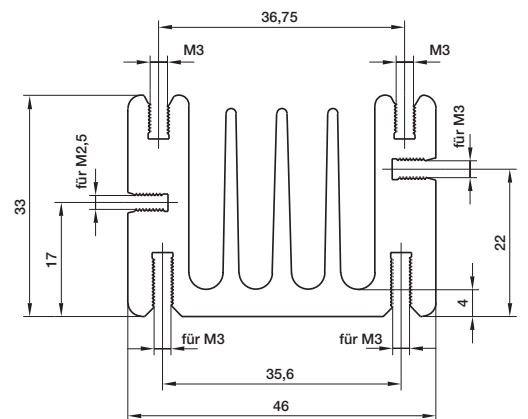
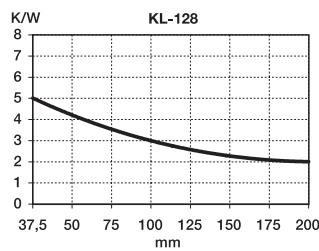
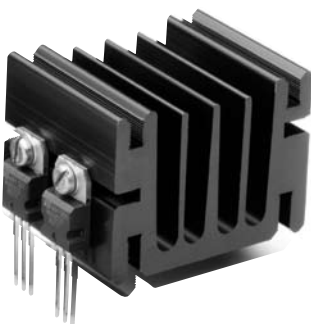
KL-127



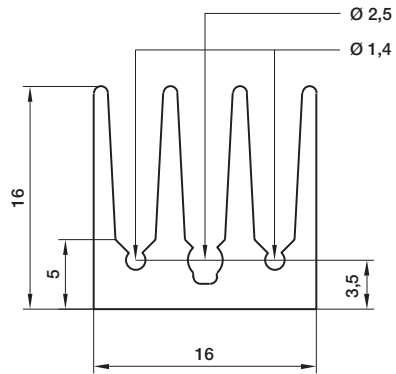
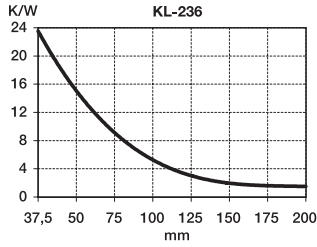
KL-230



KL-128

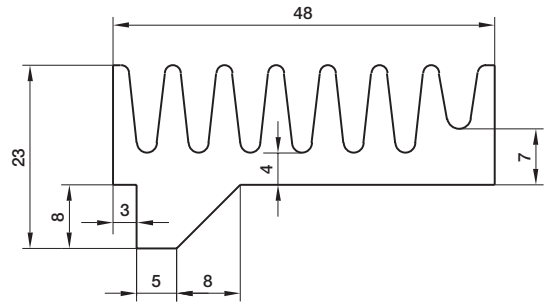
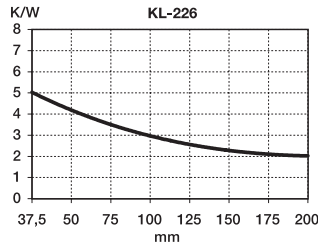


KL-236



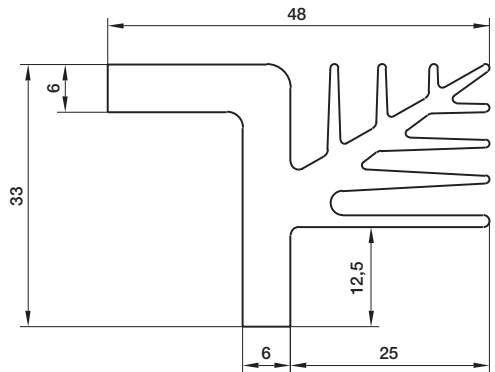
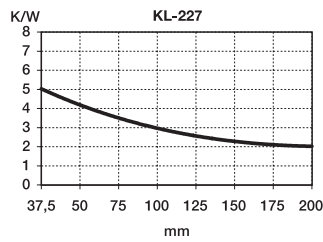
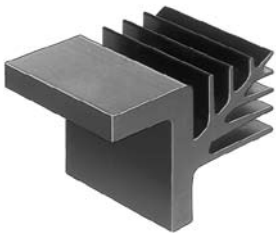
Wärmeleit- und Isolierprodukte
Heat transfer and insulation products
Transfert de chaleur et produits isolants

KL-226



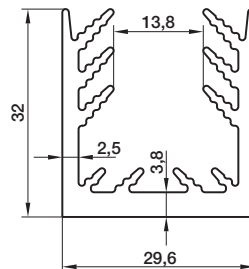
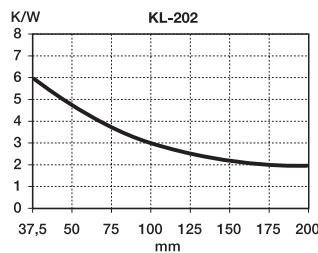
Kühlkörper
Heat sinks
Dissipateurs extrudés

KL-227



Hochleistungs-Kühlkörper
High Performance heat sinks
Dissipateur de chaleur d'haute performance

KL-202

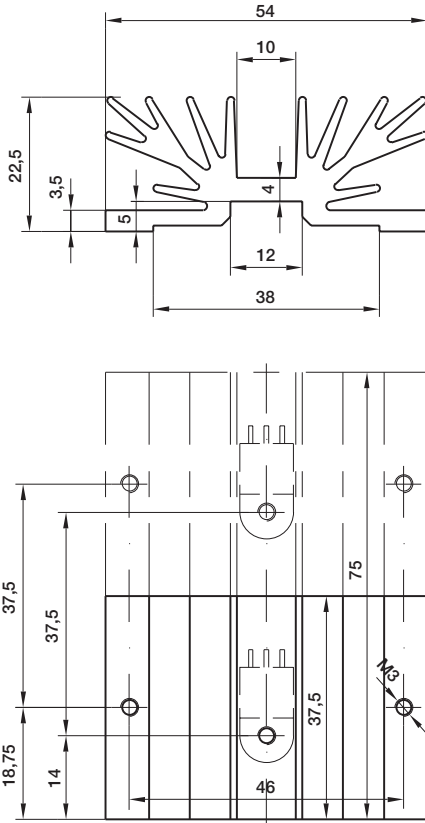
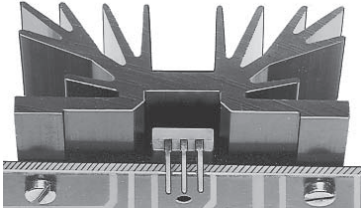


Forcierte Kühlung
Forced cooling
Tunnel ventilé

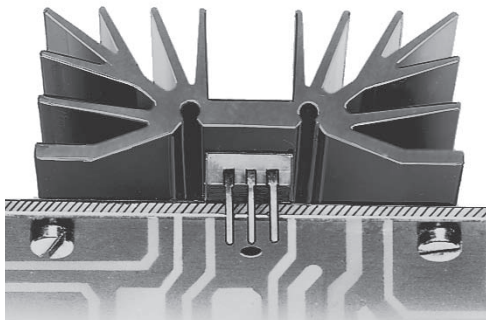
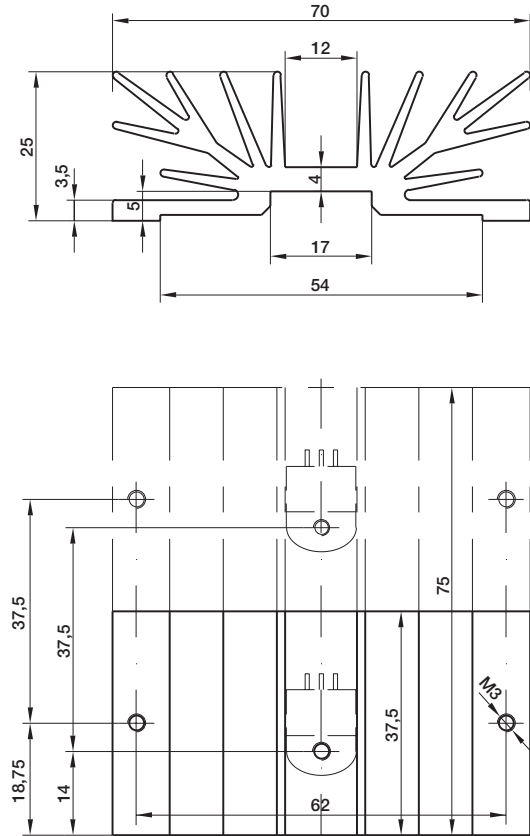
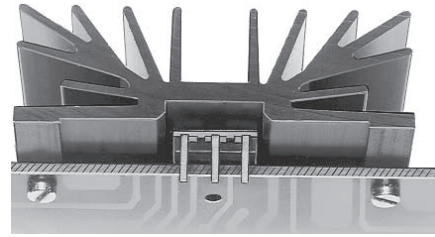
Scheibenzellen-Kühlung
Presspack cells cooling
Cellules presspack refroidissement

Fassungen und Zubehör
Sockets and accessories
Supports et accessoires

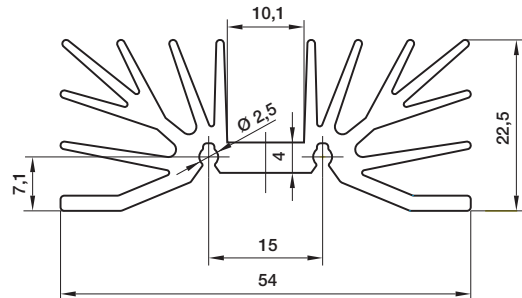
KL-108



KL-107



KL-208



Typ	Artikel-Nr.	Länge in mm	Oberfläche	Lochbild	Thermischer Widerstand (K/W)
KL-108/37,5/sw	1080151	37,5	sw	1xM3	5,7
KL-108/75/sw	1080351	75	sw	2xM3	3,8
KL-107/37,5/sw	1070151	37,5	sw	1xM3	4,3
KL-107/75/sw	1070351	75	sw	2xM3	2,9
KL-208/37,5/sw	2080151	37,5	sw	1xM3	5,7
KL-208/75/sw	2080351	75	sw	2xM3	3,8